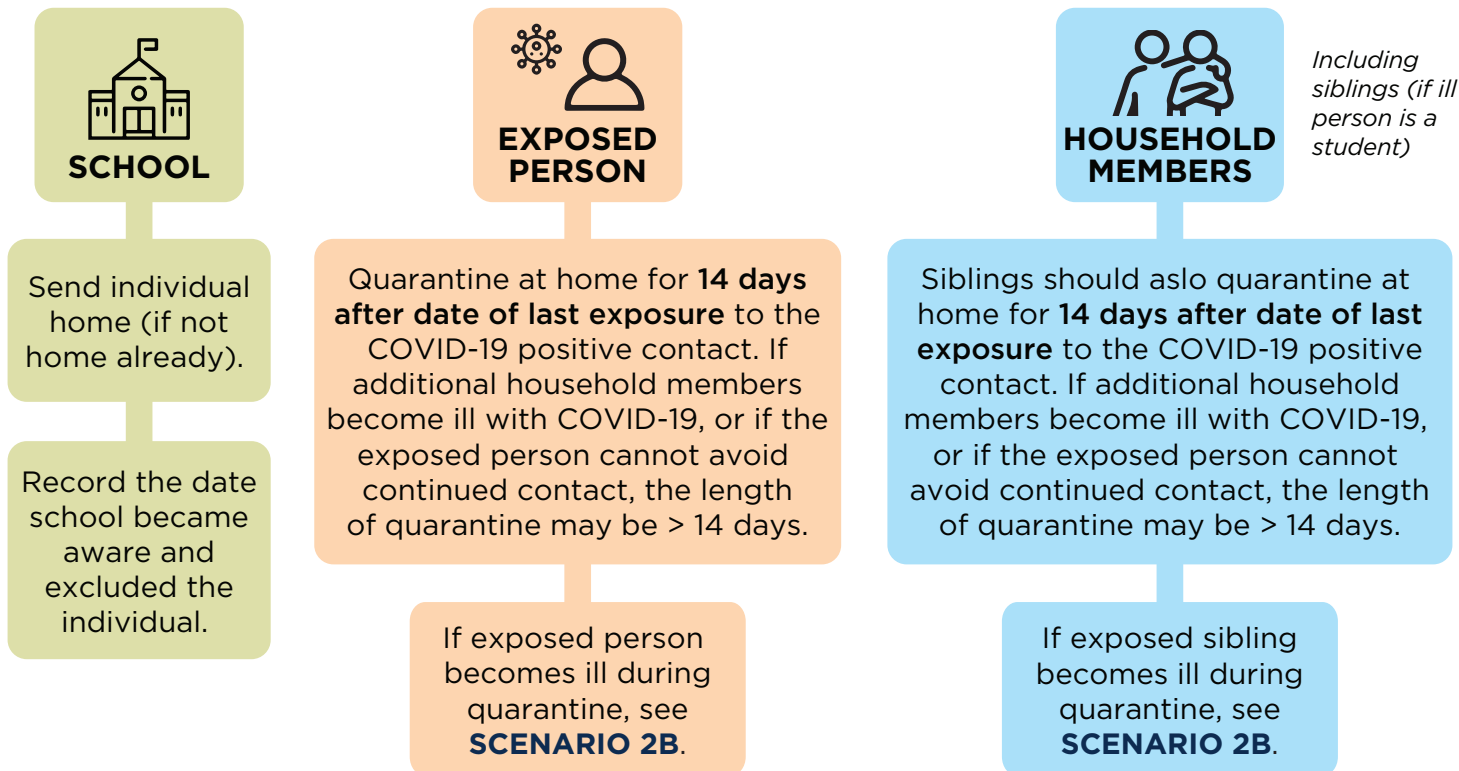


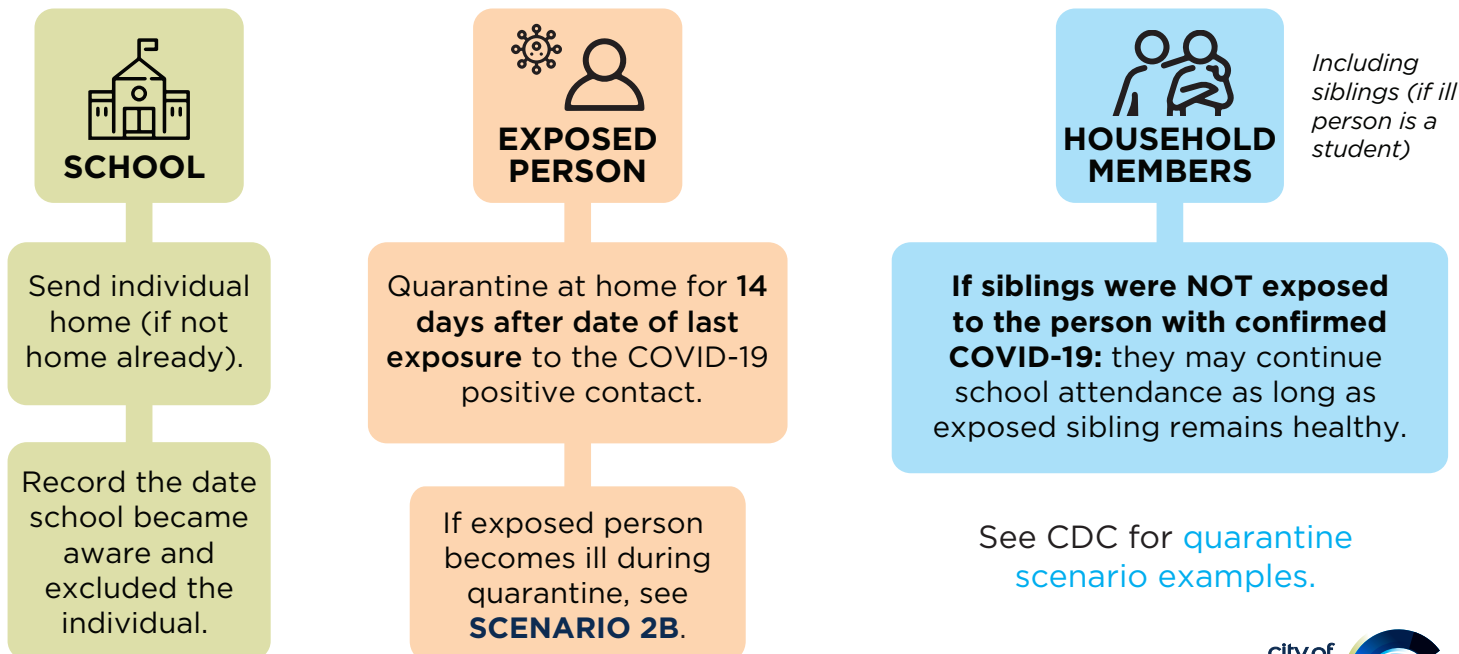
# 1. SCHOOL SCENARIOS

## HOW TO HANDLE EXPOSURE TO COVID-19

**SCENARIO 1A. A healthy student or staff member has been exposed to a person with confirmed COVID-19 within their household.**



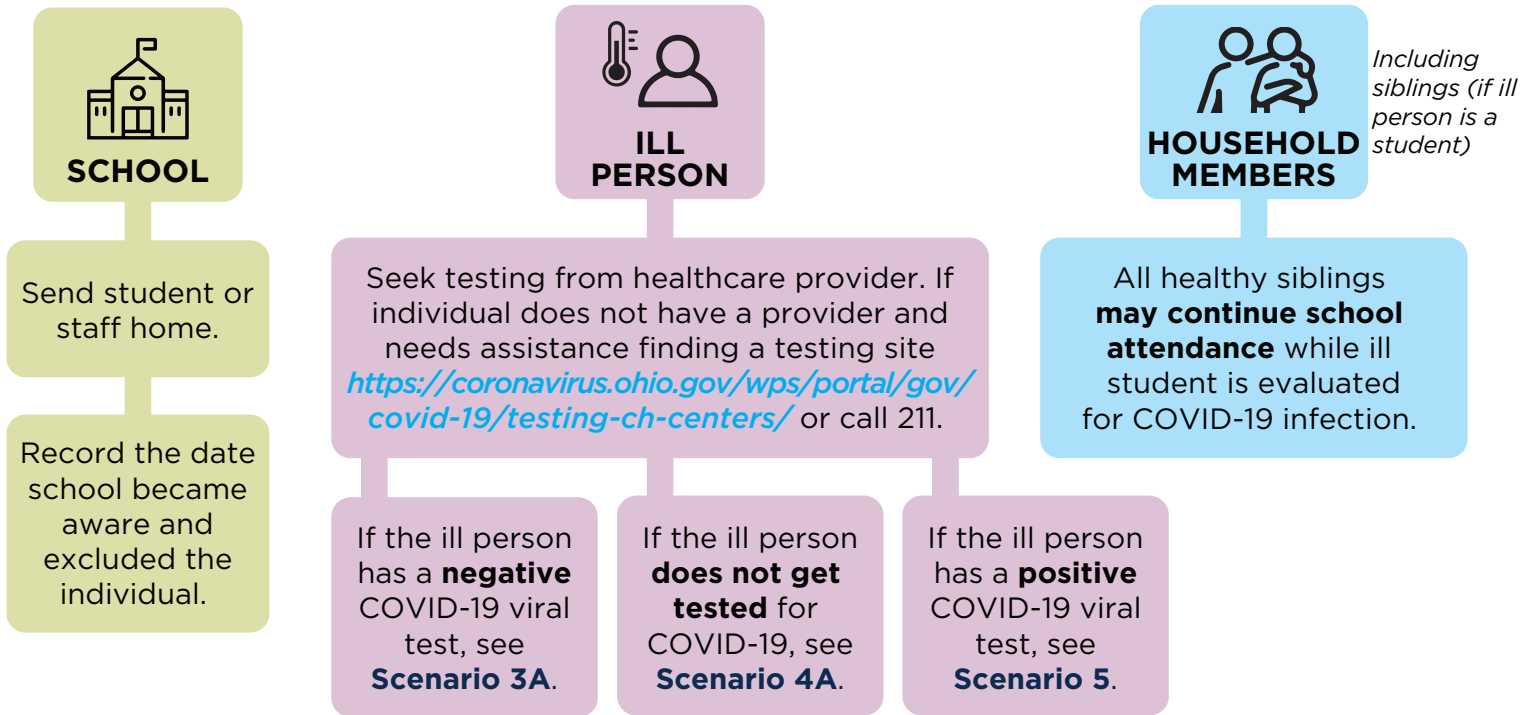
**SCENARIO 1B. A healthy student or staff member has been exposed to a person with confirmed COVID-19 within their outside of their household**



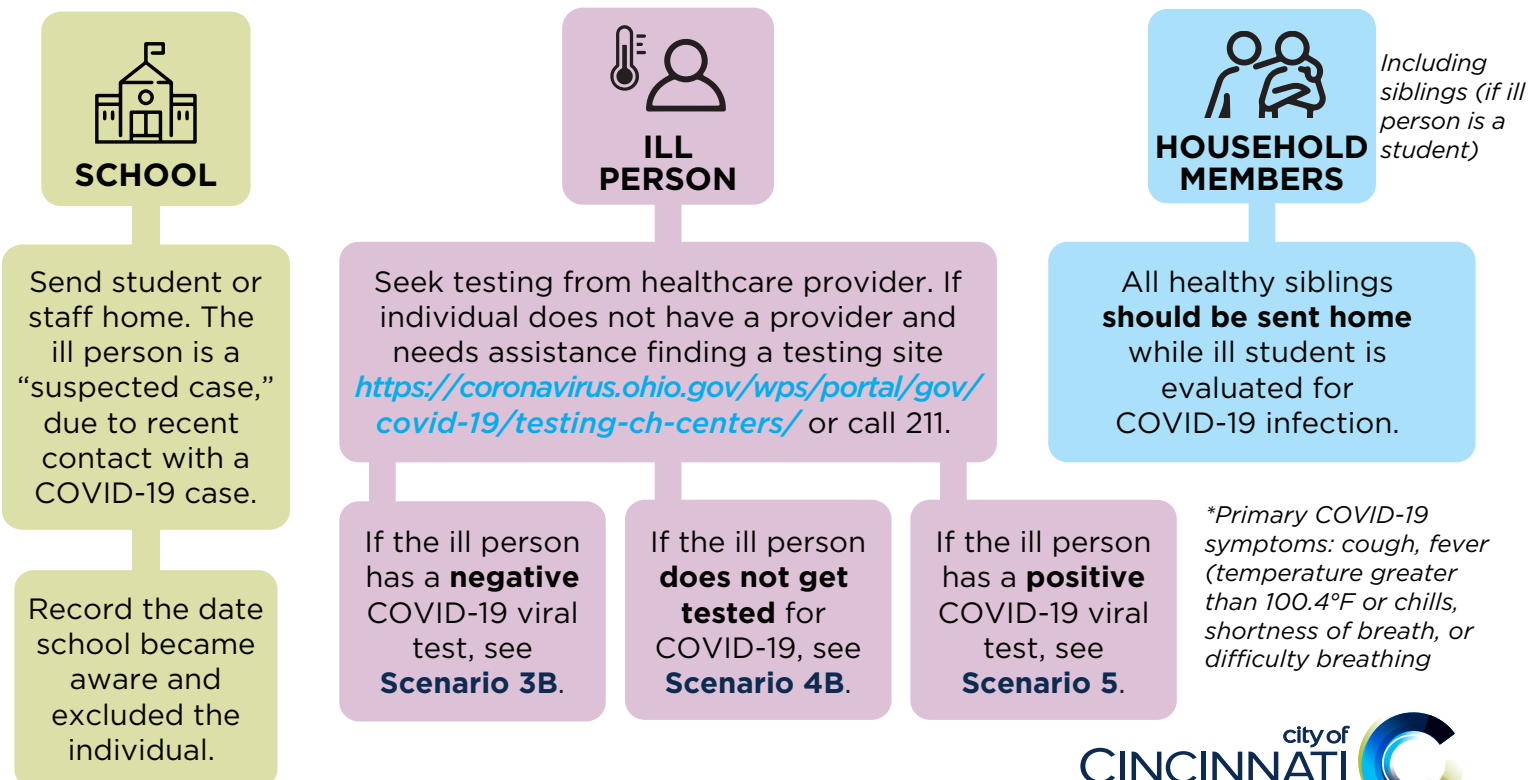
# 2. SCHOOL SCENARIOS

## HOW TO HANDLE COVID-19 ILLNESS

### SCENARIO 2A. A student or staff member **becomes ill** with COVID-19 symptoms\*. Ill person has **no known COVID-19 contacts** in past 14 days.



### SCENARIO 2B. A student or staff member **becomes ill** with COVID-19 symptoms\*. Ill person **was in close contact** with someone that had COVID-19 in past 14 days.



\*Primary COVID-19 symptoms: cough, fever (temperature greater than 100.4°F or chills, shortness of breath, or difficulty breathing)

# 3A. SCHOOL SCENARIOS

## HOW TO HANDLE A NEGATIVE COVID-19 VIRAL TEST

**SCENARIO 3A. An ill student or staff member has a **negative** COVID-19 viral test. Ill person has **no known COVID-19 contacts** in the past 14 days.**



**SCHOOL**

Send individual home (if not home already).



**ILL PERSON**

Isolate at home until 24 hours after fever is resolved, without use of fever-reducing medicine, **and** symptoms are improving.



**HOUSEHOLD MEMBERS**

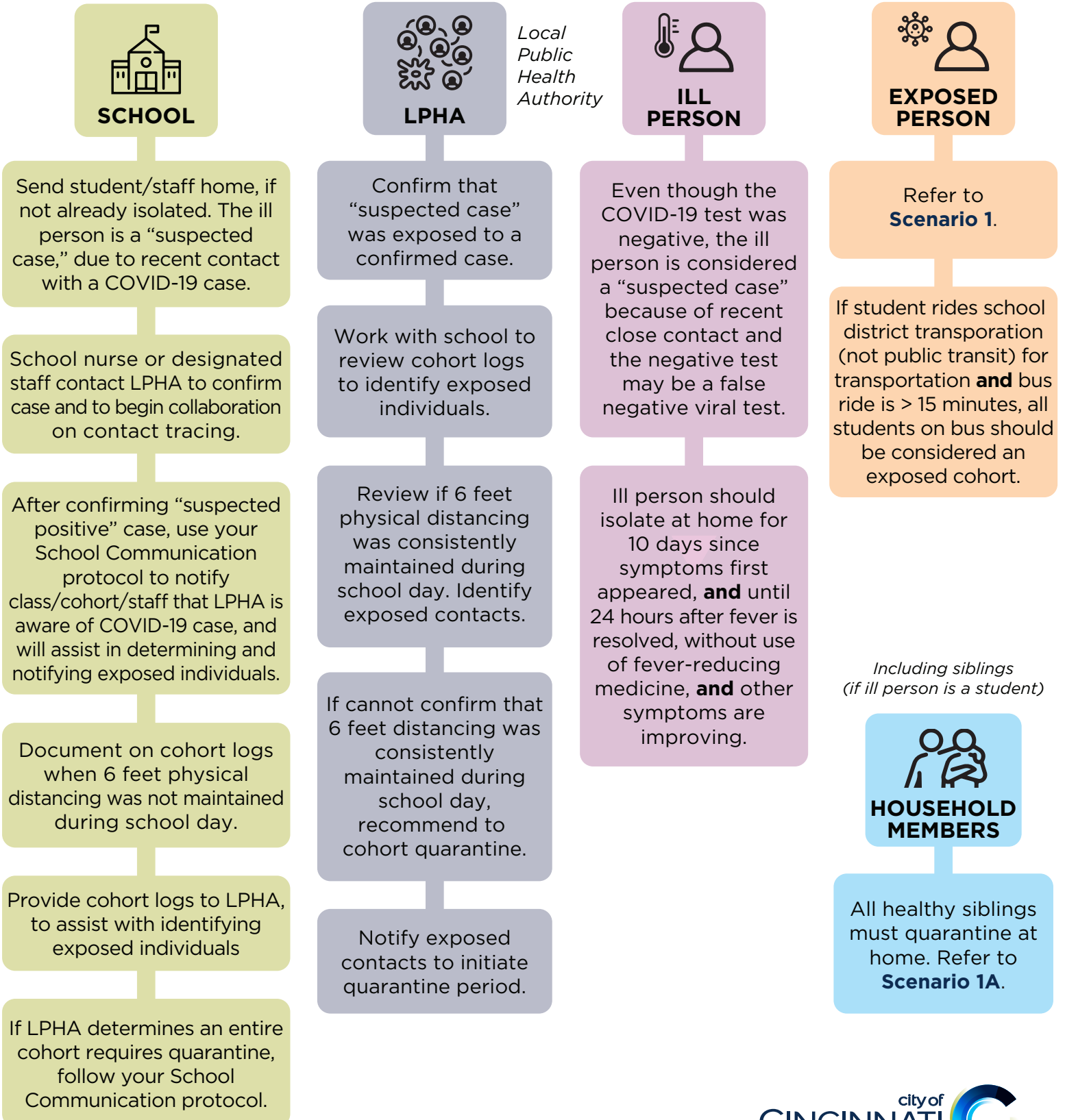
*Including siblings (if ill person is a student)*

Healthy siblings may continue school attendance.

# 3B. SCHOOL SCENARIOS

## HOW TO HANDLE A NEGATIVE COVID-19 VIRAL TEST

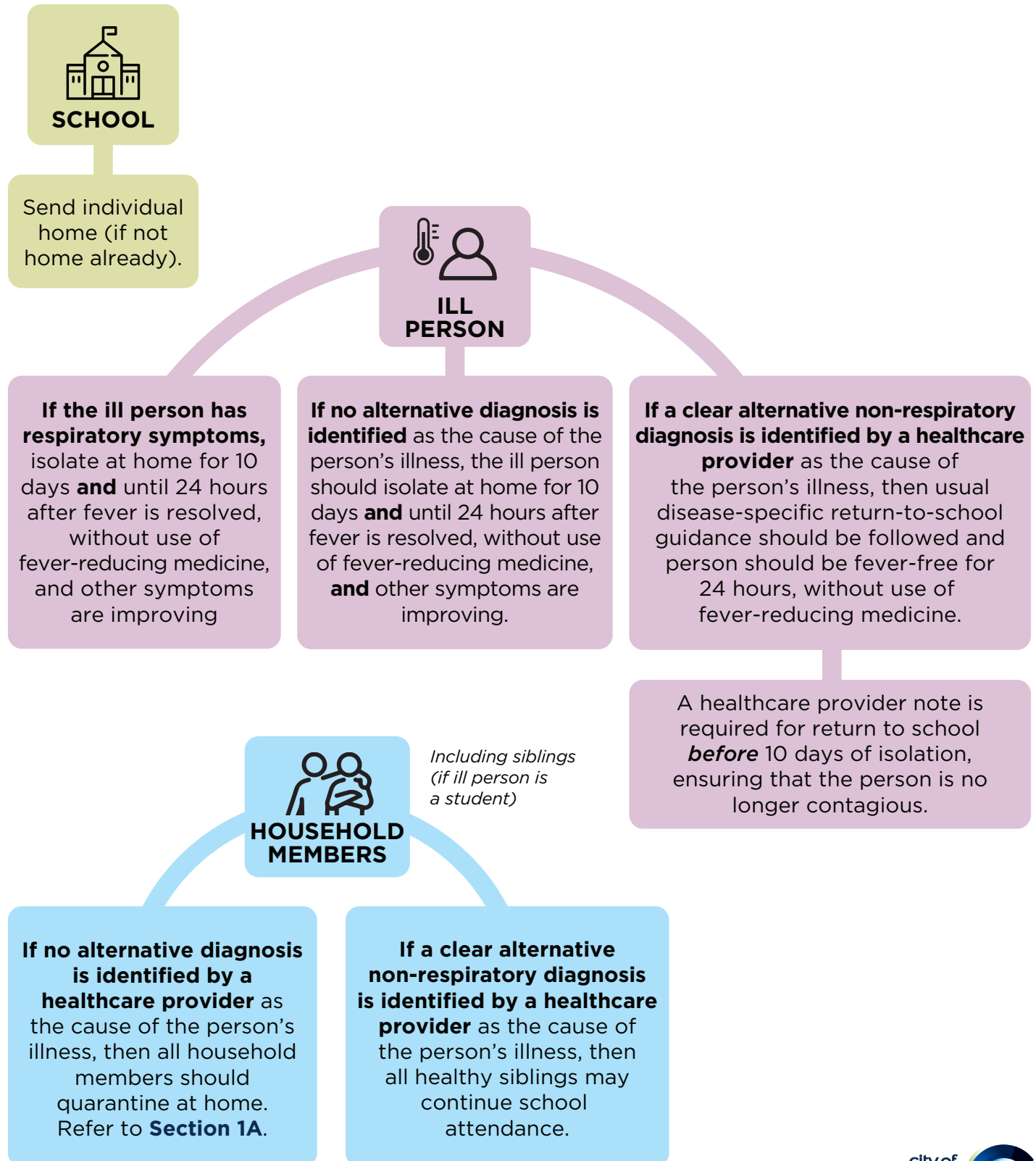
**SCENARIO 3B. An ill student or staff member has a **negative** COVID-19 viral test. Ill person was in close contact with someone that has COVID-19 in past 14 days.**



# 4A. SCHOOL SCENARIOS

## HOW TO HANDLE AN ILL PERSON WHO HAS NOT BEEN TESTED

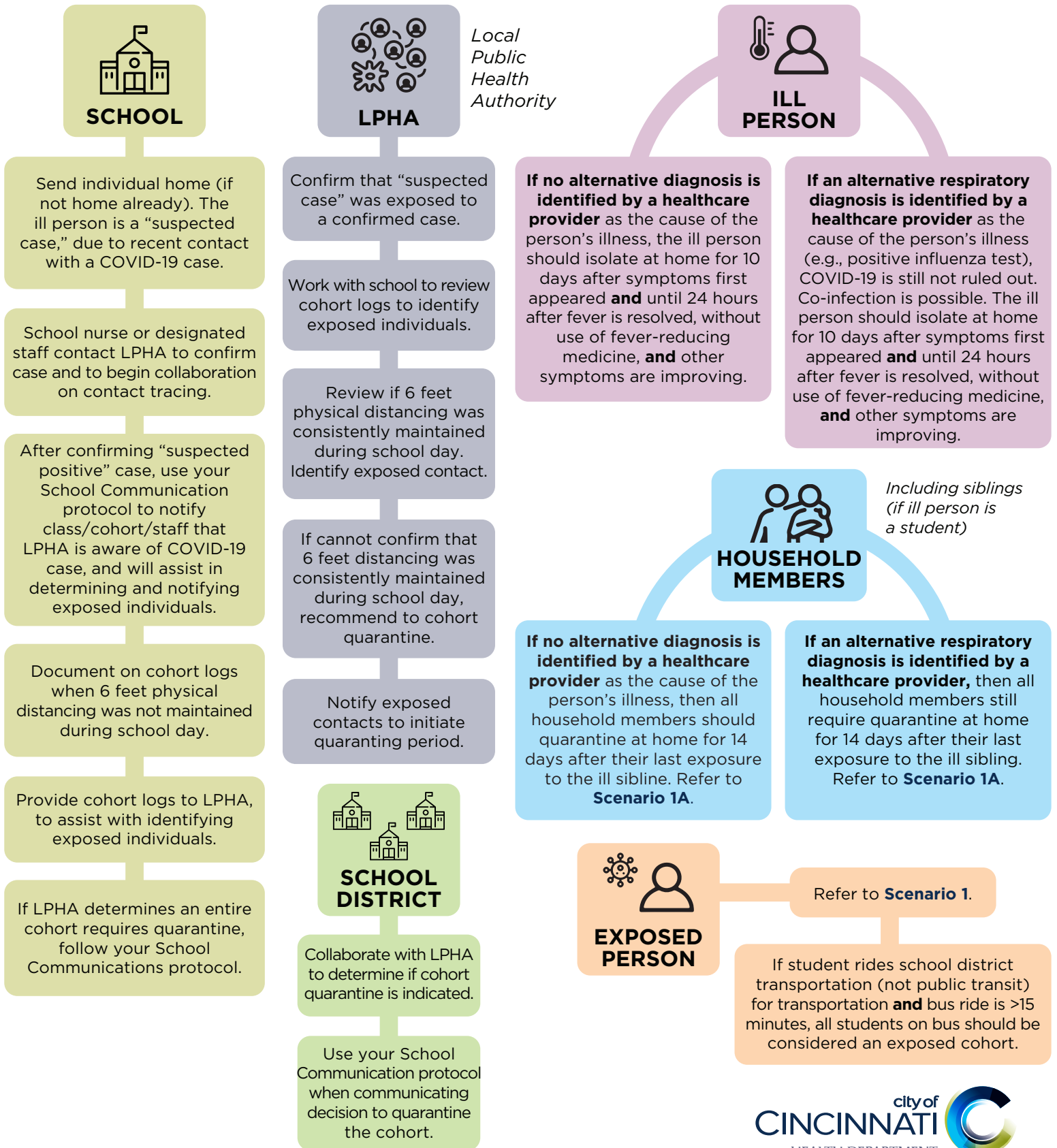
**SCENARIO 4A. An ill student or staff member who has not been tested with a COVID-19 viral test. Ill person has no known COVID-19 contacts in past 14 days.**



# 4B. SCHOOL SCENARIOS

## HOW TO HANDLE AN ILL PERSON WHO HAS NOT BEEN TESTED

**SCENARIO 4B. An ill student or staff member who has not been tested with a COVID-19 viral test, and a clear alternative non-respiratory diagnosis is not identified. Ill person was in close contact with someone who had COVID-19 in past 14 days.**



# 4C. SCHOOL SCENARIOS

## HOW TO HANDLE AN ILL PERSON WHO HAS NOT BEEN TESTED

**SCENARIO 4C. An ill student or staff member who **has not been tested** with a COVID-19 viral test, and a clear non-respiratory diagnosis **is identified** as cause of illness. Ill person **was in close contact** with someone who had COVID-19 in past 14 days.**



### SCHOOL

Send individual home (if not already). The ill person is not considered a “suspected case,” due to alternative diagnosis.



### ILL PERSON

**If a clear alternative non-respiratory diagnosis is identified by a healthcare provider** as the cause of the person’s illness, then usual disease-specific return-to-school guidance should be followed. However, this student also requires quarantine, due to recent exposure to COVID-19 case. Person must quarantine at home for **14 days after date of last exposure** to the COVID-19 positive contact (refer to **Scenario 1**), **and** meet usual return-to-school guidance for diagnosis.

If person develops new COVID-19 symptoms during quarantine, refer to **Scenario 2B**.

*Including siblings (if ill person is a student)*



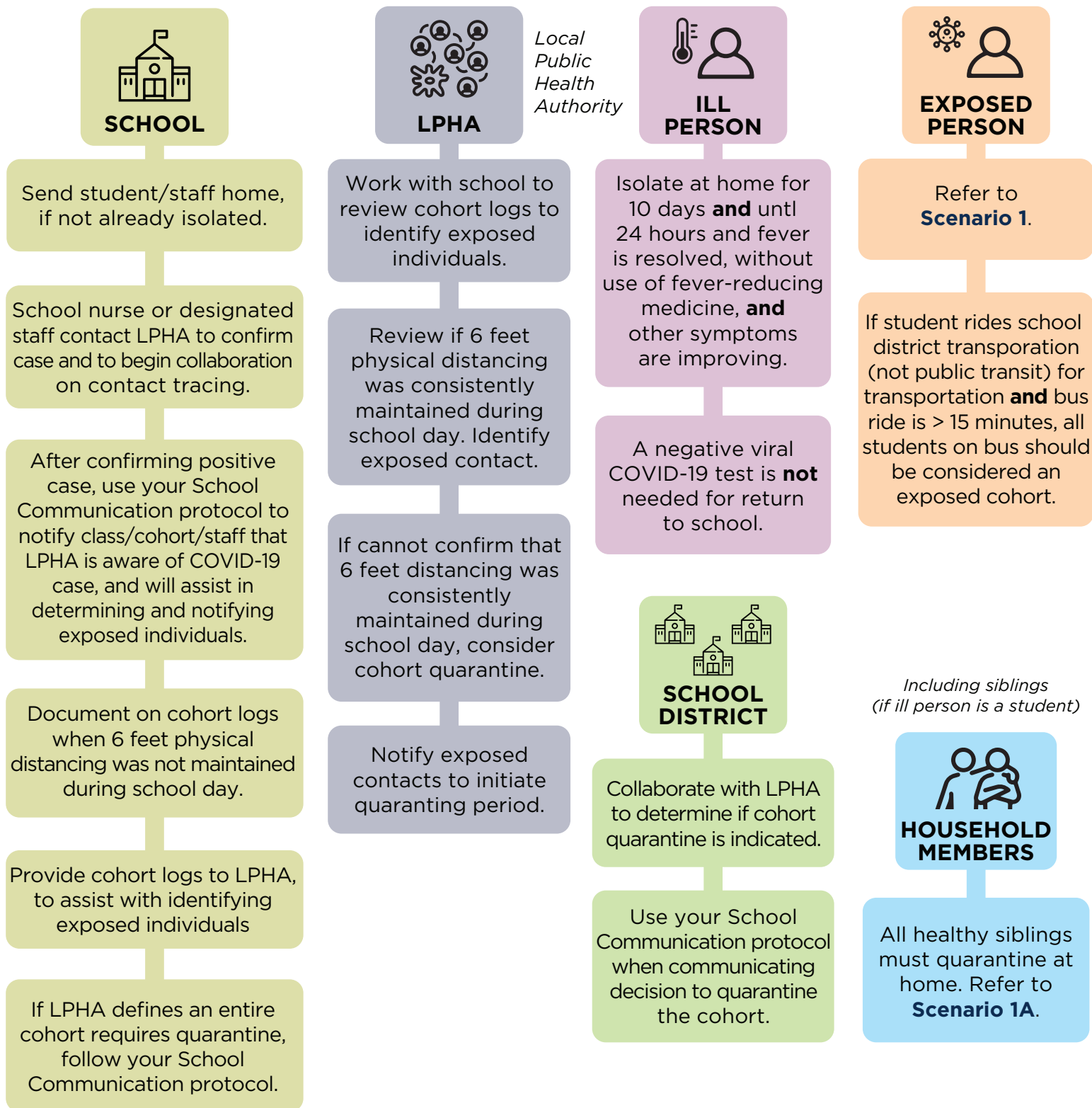
### HOUSEHOLD MEMBERS

**If a clear alternative non-respiratory diagnosis is identified by a healthcare provider** as the cause of the person’s illness, then all household members may continue school attendance, as long as family member develops no COVID-19 symptoms during quarantine.

# 5. SCHOOL SCENARIOS

## HOW TO HANDLE A POSITIVE COVID-19 VIRAL TEST

**SCENARIO 5. One student or staff member has a **positive** COVID-19 viral test.**

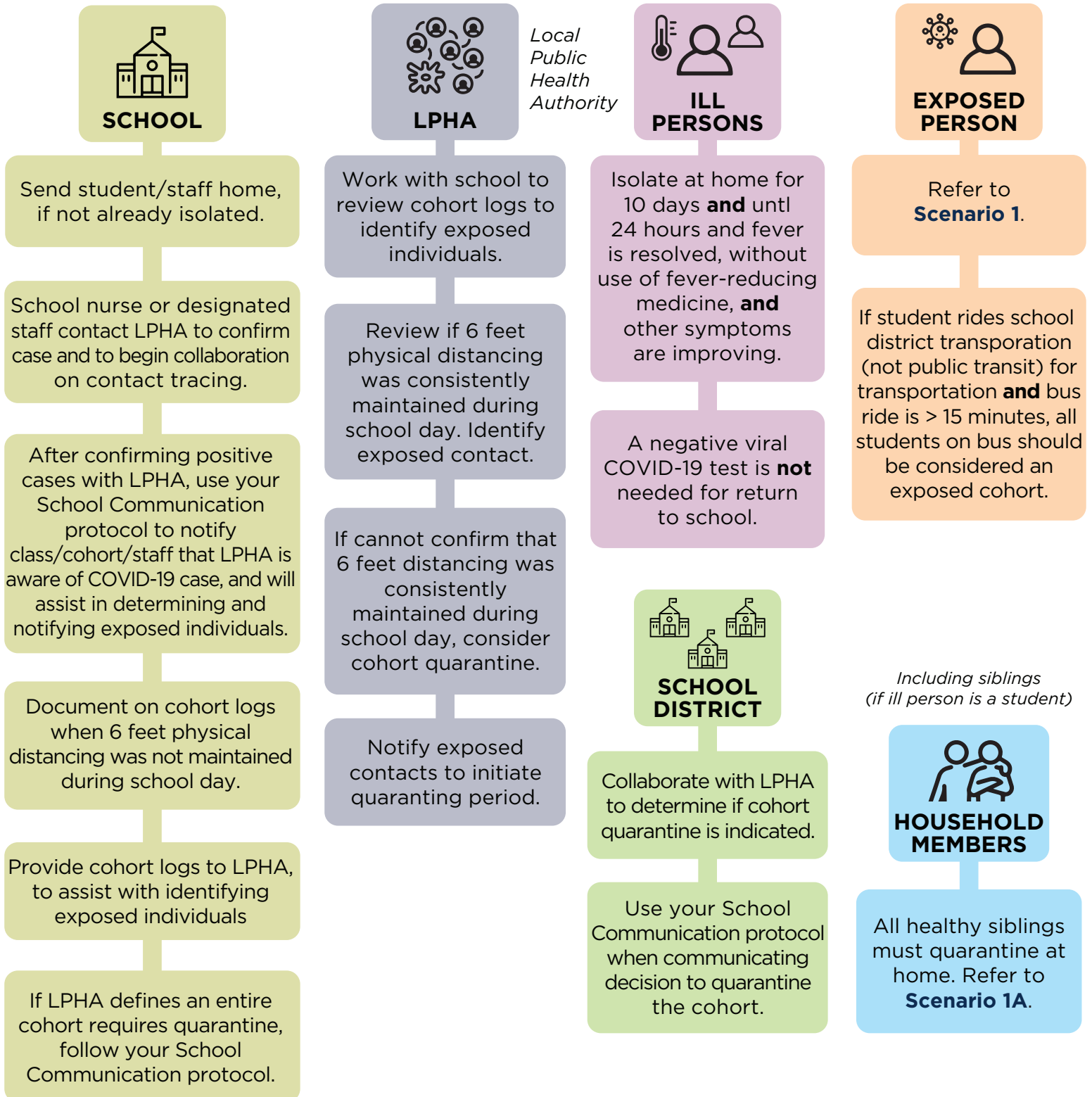




# 6. SCHOOL SCENARIOS

## HOW TO HANDLE MULTIPLE POSITIVE COVID-19 VIRAL TESTS

**SCENARIO 6. Two or more people within the same cohort have a positive COVID-19 viral test within 14 days.**



# 7. SCHOOL SCENARIOS

## HOW TO HANDLE MULTIPLE POSITIVE COVID-19 VIRAL TESTS

**SCENARIO 7. Two or more people within the DIFFERENT cohorts have a positive COVID-19 viral test within 14 days.**

